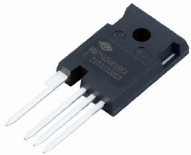




Automotive-Grade Power Devices

MacMic's Automotive Power Devices Provide High Efficiency and Reliability for EV Core Systems, DC/DC Conversion, and Charging Station.

• • • Automotive-Grade Discretes • • •



TO-247-4L



TO-263-7L

Part Number	V _{DC} (V)	I _D (A)	R _{ds(on)} (mΩ)	Package Outline
MMQ40NAS075KZ	750	51	40	TO-247-4L
MMQ40NAS075SJ	750	53	40	TO-263-7L
MMQ54NAS075SJ	750	37	54	TO-263-7L
MMQ70NAS120KZ	1200	TBD	70	TO-247-4L
MMQ70NAS120SJ	1200	TBD	70	TO-263-7L
MMQ30NAS120SJ	1200	65	30	TO-263-7L

📍 No.5, Xinzhu Road, Xinbei District, Changzhou, Jiangsu Province, China

☎ +86-519-85166088

✉ sales@macmicst.com

🌐 www.macmicst.com/en

  宏微、MACMIC are trademarks of MacMic. All trademarks are the properties of MacMic.



• • • Automotive-Grade Power Modules • • •



GVB Series
750V / 400A



GVD Series
750V / 280A, 400A



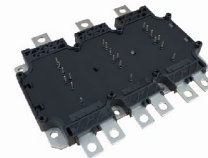
GVC Series
750V / 400A



GV / NV Series
IGBT: 750V, 1200V / 600A, 820A, 950A
SiC: 1200V/540A, 439A



GWB Series
1200V / 450A, 600A, 800A



GVE Series
750V / 500A, 650A, 880A

Circuit	Part Number	V _{CE(sat)} min. (V)	I _C T _C =65~110°C (A)	V _{CE(sat)} @T _J =25°C typ. (V)	P _{tot} max. (W)	E _{off} @T _J =125°C (mJ)	R _{thJC} max. (K/W)	Package Outline
<p>B</p> <p>X</p> <p>X</p>	IGBT							
	MMG450WB120B6TC	1200	450	1.85	2305	45.0	0.065	GWB
	MMG600WB120B6T6	1200	600	1.70	2941	74.5	0.051	GWB
	MMG800WB120B6T7	1200	800	1.80	3750	121.0	0.04	GWB
	MMG280VD075X6T7	750	280	1.38	595	15.5	0.252	GVD
	MMG400VD075X6TC-12	750	400	1.40	1027	24.0	0.146	GVD
	MMG400VB075X6TC	750	400	1.21	1071	21.7	0.107	GVB
	MMG400VC075X6TC	750	400	1.21	1070	22.3	0.14	GVC
	MMG600V075X6T7	750	600	1.10	937	20.0	0.16	GV
	MMG820V075X6T7	750	820	1.10	1640	31.5	0.12	GV
	MMG820V075X6TC	750	820	1.15	1070	20.0	0.14	GV
	MMG950V075X6T7	750	950	1.15	1800	28.2	0.10	GV
	MMG600V120X6RS	1200	600	1.60	1500	51.0	0.10	GV
	MMG500VE075X6T7	750	500	1.35	600	15.0	0.23	GVE
	MMG650VE075X6T7	750	650	1.10	950	20.0	0.16	GVE
MMG880VE075X6T7	750	880	1.00	1300	18.0	0.14	GVE	

Circuit	Part Number	V _{DSS} min. (V)	I _D (A)	R _{ds(on)} (mΩ)	E _{off} @T _J =125°C (mJ)	P _{tot} max. (W)	R _{thJF} max. (K/W)	Package Outline
<p>X</p>	SiC							
	MMN01V120X6BS	1200	540	1.57	38.6	1095	0.105	NV
	MMN02V120X6BS	1200	439	2.12	19.7	974	0.118	NV